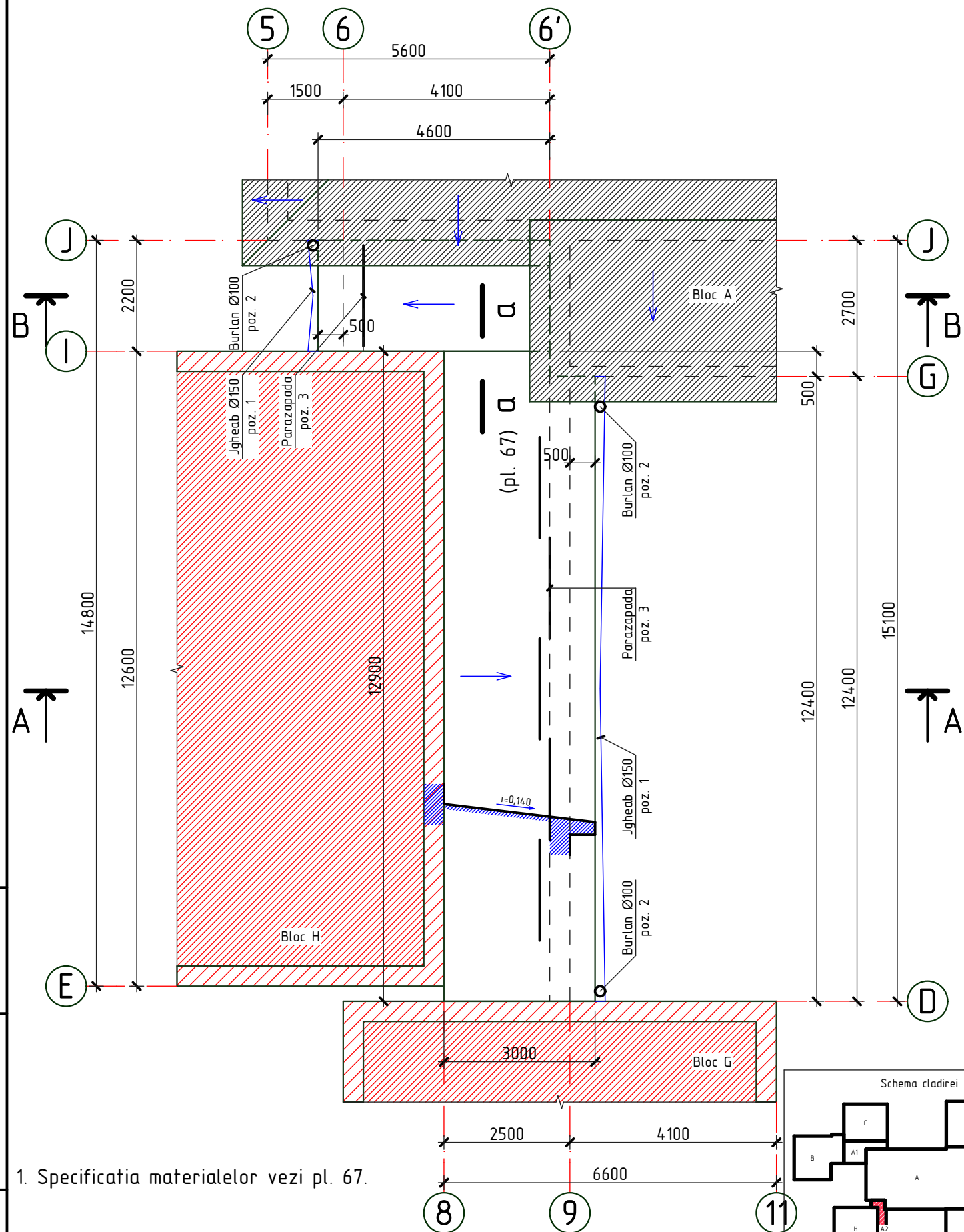
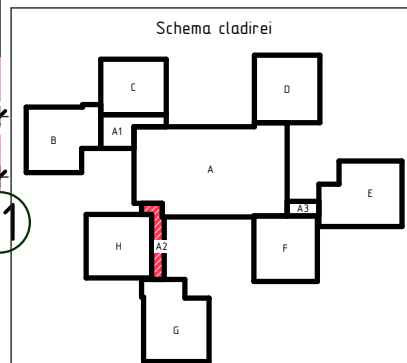


Plan acoperis

sc. 1:100

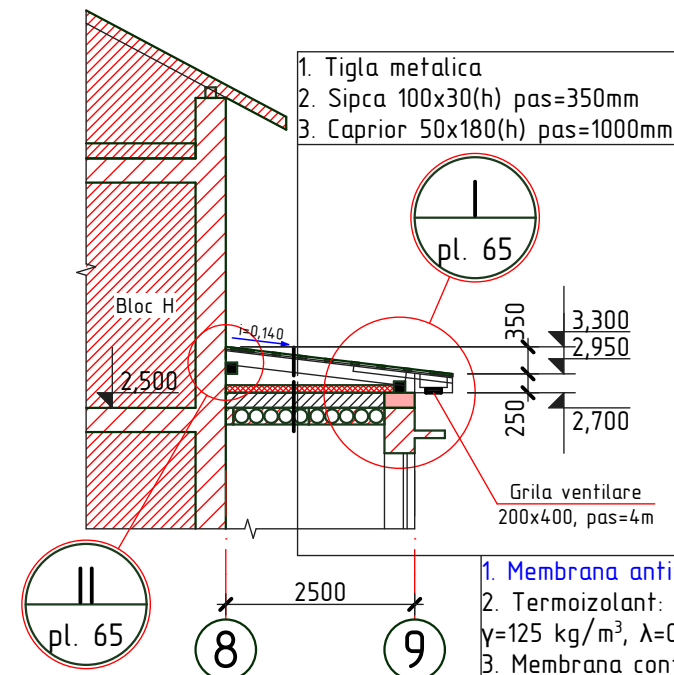


1. Specificatia materialelor vezi pl. 67.



Sectionea A-A

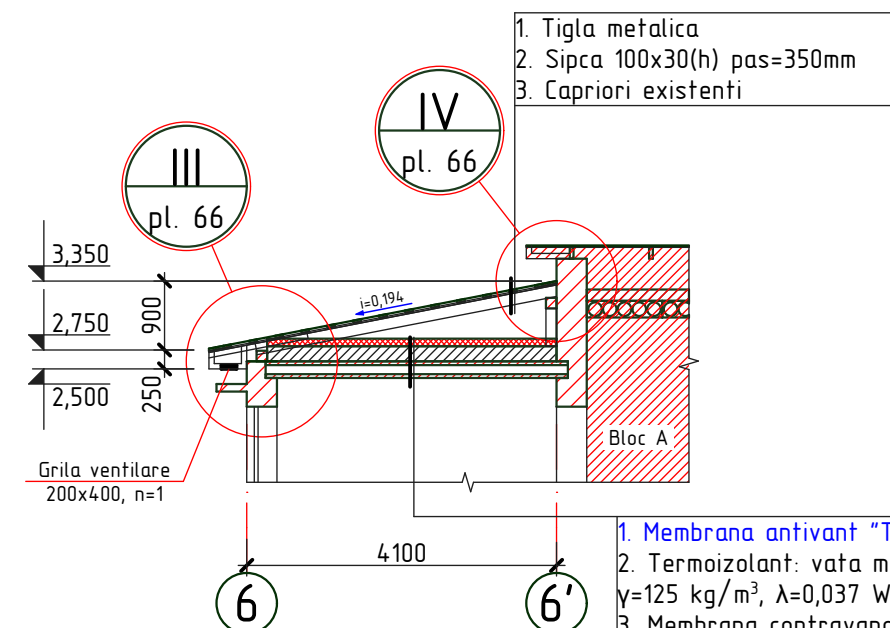
sc. 1:100



1. Membrana antivânt "TEND"
2. Termoizolant: vata minerala bazaltica, ignifuga $\gamma=125 \text{ kg/m}^3$, $\lambda=0,037 \text{ W/mk}$, $\delta=100\text{mm}$
3. Membrana contravapori "TEND"
4. Invelis existent de acoperis $\delta=250\text{mm}$
5. Planseu existent

Sectionea B-B

sc. 1:100



1. Membrana antivânt "TEND"
2. Termoizolant: vata minerala bazaltica, ignifuga $\gamma=125 \text{ kg/m}^3$, $\lambda=0,037 \text{ W/mk}$, $\delta=100\text{mm}$
3. Membrana contravapori "TEND"
4. Invelis existent de acoperis $\delta=250\text{mm}$
5. Planseu existent

2020	28.07-D/20-SAC			Reparatia capitala a acoperisului scolii primare nr. 21 "S. Vangheli" din str. Tudor Vladimirescu 16			
A.S.P	Mihaila V.		07.20	Scoala primara Bloc A2	faza	plansa	planse
I.S.P	Hihlat Em.		07.20		PE	64	
Elaborat	Mihaila V.		07.20	Plan acoperis. Sectionea A-A si B-B		"GEO-CAD-PROIECT" mun. Balti	